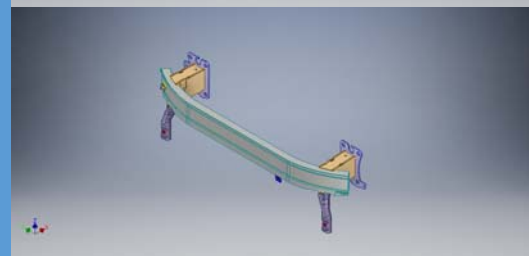
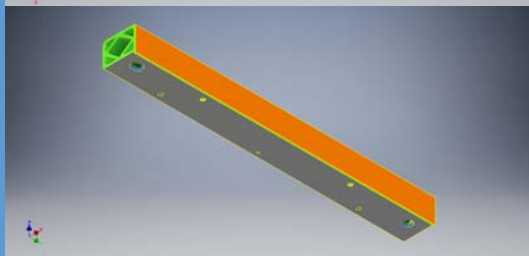
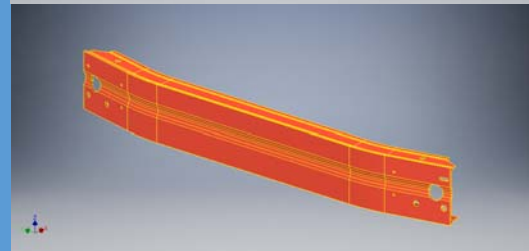
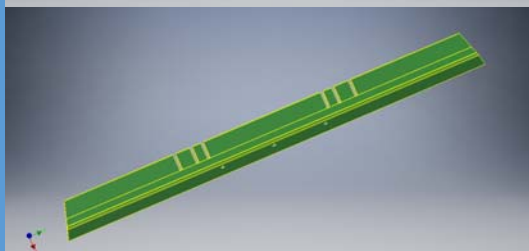
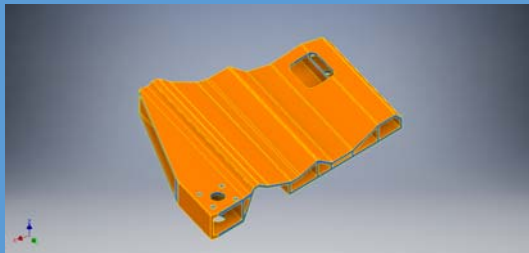




Lightweighting

ALUMINIUM



Prototypes

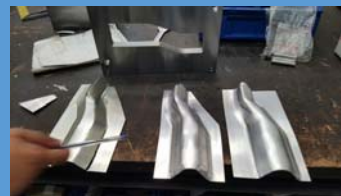
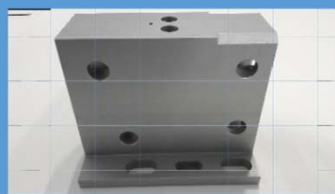
We combine extrusion profiles with stamped sheet to make CMS (Crush management systems) and other parts of cars B&W.

We advise you about the suitable alloy.

We use different manufacturing methods:

Bending, machining, stamping, punching, turning, welding, laser cutting.

We make 3D reports for assure the shape of the component.

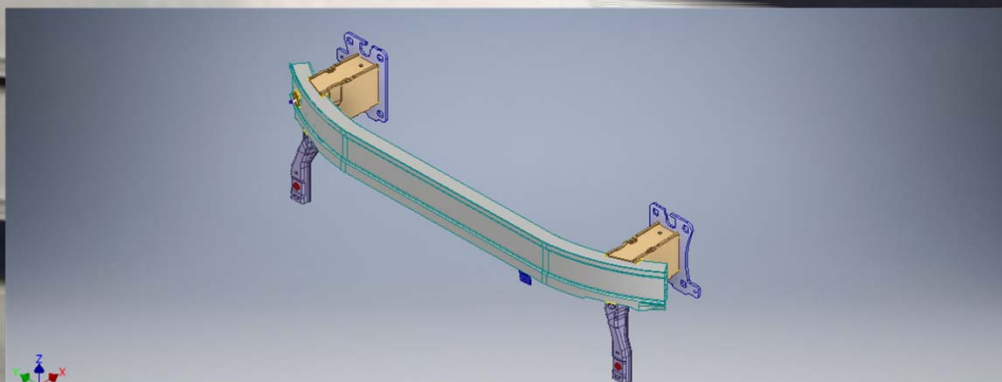
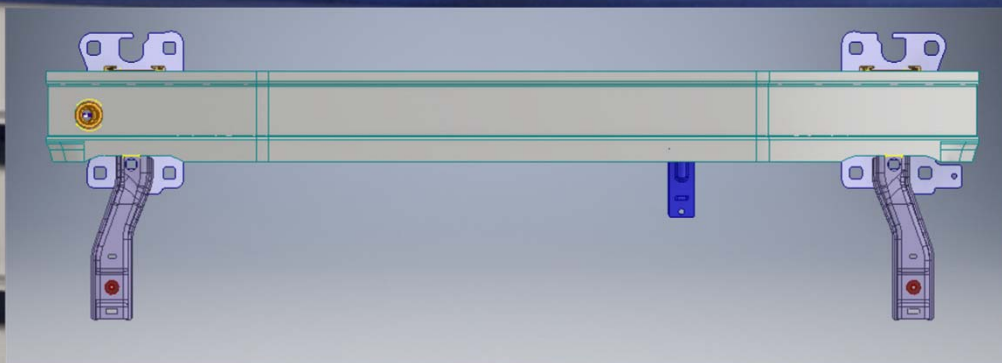


CMS Model 1:

Prototipe for testing cars (150 uds).

- * Cross bar beam: 6082 T6 alloy.
- * Plates: 6082 T6 Alloy.
- * Crush box: 6063 T64.
- * Bracket: 6063 T6.
- * Tow hook: 6063 T6.
- * Support pin: 6063.

We supply the bumper welded with MIG.



CMS Model 2:

Prototype for testing design and alloys (200 uds).

- * Cross bar beam: 6082 T6 alloy.

- * Plates: 6063 T66 Alloy.

- * Crush box: Three options:

- 1.- 6063 T64.

- 2.- 6063 T4.

- 3.- C24.

We supply the components and the customer welds the bumper.

